

OVERVIEW

\$134,747,543

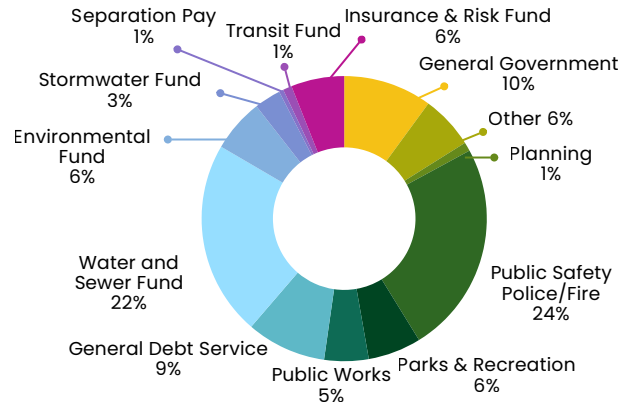
Total proposed FY 2026-2027 Budget for the City of Kannapolis.

55.95¢ Per \$100 valuation tax rate. **No increase from 2025.**

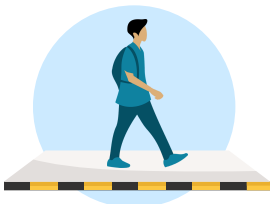


Water & Sewer base rate will increase by **\$6.25/ month**

BY DEPARTMENT



KEY STRATEGIC PRIORITIES



Street Paving & Sidewalk Maintenance



Replacement Police Vehicles, Body Cams, and Equipment



Addition of Six Firefighters & Adaptive Response Program



Employee Investment & Retention



Fourteen Water & Wastewater Projects

CONTINUING INITIATIVES



Kannapolis Lake Spillway Replacement



Western Kannapolis Communications Tower



History Museum & Visitors Center



Rider Public Transit

64K

Estimated Population

602

Total Permits Issued in FY 2026, a **\$2.6M value**

FY 2025-26 CITY ACHIEVEMENTS

- Google Announced at Overlook 85
- Momentec Brands Announced
- Headquarters Move to Metro 63
- Dam Spillwell Project Began
- Loop the Loop Expanded to Afton Ridge
- New Online Utility Payment Portal Launched
- Swanee Theatre Children's Series Received State Award
- Police Department Received National Reaccreditation
- Barry Lentz Park Dedicated
- New Fire Engine 41 Arrived

EMPLOYEE BENEFITS

NEW IN 2026/2027

- 5% flat 401k City contribution for all employees (10% for sworn law enforcement)

- 5% salary increase for all employees (combination of performance and cost of living increase)



- Salary Study Plan Implementation (*more info coming soon*)

- Employer Paid Health Insurance

- No Increase in Employee Costs
- Employee Choice Between HSA and PPO plan



- New Vendor for Employer Paid Vision and Dental



- Employer Paid Short-Term Disability



CONTINUING

- Remote Work Options
- Longevity Pay
- Incentive Pay (Police, Fire, Water Resources and Engineering); fixed shifts in PD, shift differential
- Employer HSA (\$2,200) and HRA (\$2,000) Contributions
- Separation Pay at Retirement (eligibility requirements apply)
- Paid Caregiver Leave
- Kannapolis Cannon Baller Tickets
- Kannapolis YMCA Membership (discount for families of employees)
- Free Personalized Nutrition Counseling
- Enhanced Onsite Employee Health Clinic
 - Includes Primary Care for Families
- Health & Dental Insurance for Retirees for eligible individuals
- Paid Sick, Vacation, & Holiday Time
- Tuition Reimbursement
- EAP
- Paid Basic Term Life (up to \$100k) and AD&D Policy
- Paid Volunteer Hours, Birthday Leave, and Bereavement Leave
- Mandated State Retirement System Contribution by Employer