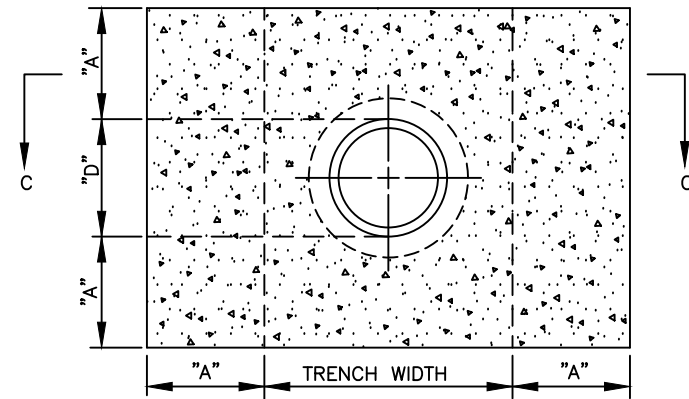


NOMINAL DIAMETER "D"	"A"	"B"	TRENCH WIDTH "W"	REINFORCING STEEL	
				BARS "X"	SPACING "Y"
6"	12"	12"	24"	#6	12"
8"	12"	12"	24"	#6	12"
12"	15"	12"	30"	#6	12"
16"	20"	15"	36"	#8	12"
24"	30"	18"	42"	#8	12"

NOTES:

1. POUR CONCRETE AGAINST FIRM UNDISTURBED SOIL. FILL AGAINST COLLAR TO BE COMPACTED TO 95% PROCTOR FOR 6' ALONG THE PIPE ON BOTH SIDES OF THE COLLAR.
2. COMPLETELY BACK FILL & COMPACT BEFORE PRESSURE TESTING.
3. TRENCH WIDTHS SHALL CONFORM TO STANDARD TRENCH DETAIL.
4. TIE BOLTS SHALL BE LOAD RATED 22,000 PSI PER BOLT. BOLTS SHALL MEET THE REQUIREMENTS OF ASTM A325 TYPE 3D, TENSILE STRENGTH 60,000 PSI MINIMUM.
5. TIE RODS SHALL BE PLAIN OR CONTINUOUS THREADED AND SHALL BE RATED 50,000 P.S.I.
6. ALL RODS SHALL BE COATED WITH TAR AFTER INSTALLATION.
7. VALVE BOX CONCRETE PAD SHALL BE 24" SQUARE OR 8" MINIMUM FOR EDGE OF VALVE BOX LID TO EDGE OF CONCRETE PAD.



SECTION D-D

NOT TO SCALE