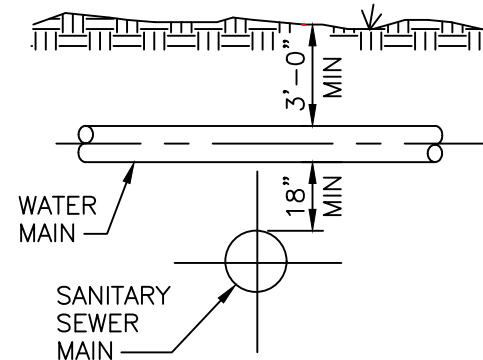
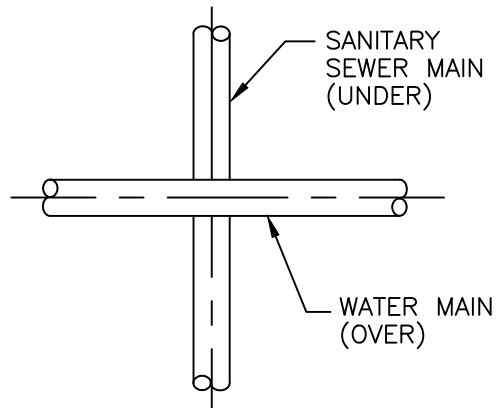


WATER MAINS SHALL BE LAID AT LEAST 10 FEET LATERALLY FROM EXISTING OR PROPOSED SEWERS, UNLESS LOCAL CONDITIONS PREVENT A 10 FOOT LATERAL SEPARATION, IN WHICH CASE:

1. THE WATER MAIN SHALL BE LAID IN A SEPARATE TRENCH, WITH THE ELEVATION OF THE BOTTOM OF THE WATER MAIN AT LEAST 18 INCHES ABOVE THE TOP OF THE SEWER; OR
2. THE WATER MAIN SHALL BE LAID IN THE SAME TRENCH AS THE SEWER, WITH THE WATER MAIN LOCATED AT ONE SIDE ON A BENCH OF UNDISTURBED EARTH AND WITH THE ELEVATION OF THE BOTTOM OF THE WATER MAIN AT LEAST 18 INCHES ABOVE THE TOP OF THE SEWER.

NOTE: IF UNABLE TO MEET MINIMUM SEPARATIONS, ENGINEER MUST DEMONSTRATE IMPRACTICABILITY IN ACCORDANCE WITH 15A NCAC 18C.0906 (f)



A WATER MAIN THAT CROSSES A SEWER SHALL BE LAID A MINIMUM VERTICAL DISTANCE OF 18 INCHES FROM THE OUTSIDE OF THE WATER MAIN AND THE OUTSIDE OF THE SEWER, EITHER ABOVE OR BELOW THE SEWER, WITH PREFERENCE TO THE WATER MAIN LOCATED ABOVE THE SEWER. ONE FULL LENGTH OF WATER PIPE SHALL BE LOCATED SO THAT BOTH JOINTS WILL BE AS FAR FROM THE SEWER AS POSSIBLE.

NOTE: IF UNABLE TO MEET MINIMUM SEPARATIONS, ENGINEER MUST DEMONSTRATE IMPRACTICABILITY IN ACCORDANCE WITH 15A NCAC 18C.0906 (f)