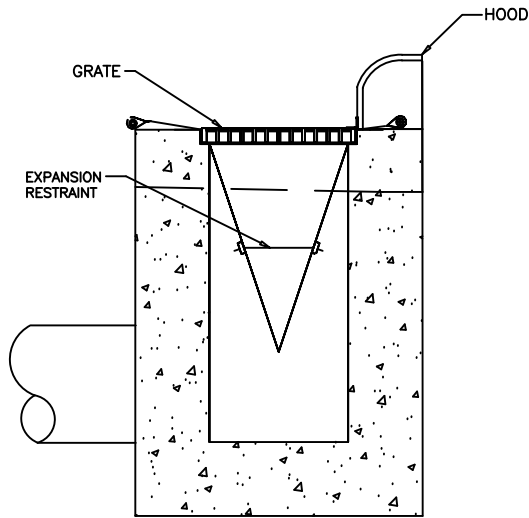
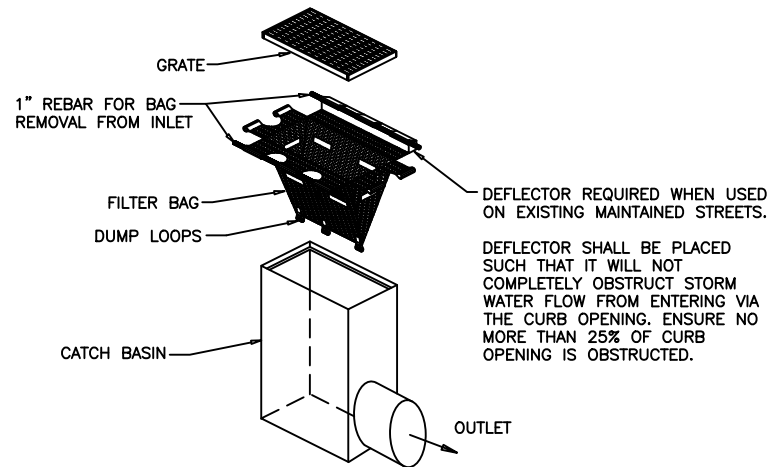


NOTES:

1. INLET MAINTENANCE SHALL BE DOCUMENTED IN PROJECT LOG BOOK.
2. FILTER TYPES SHALL BE APPROVED BY THE CITY INSPECTOR PRIOR TO INSTALLATION.
3. FILTER BAGS MAY BE REMOVED WHEN SITE IS STABILIZED AT THE DIRECTION OF THE ENGINEER.
4. FILTER BAGS SHALL BE REMOVED PRIOR TO STREET ACCEPTANCE AND/OR CLOSE OUT OF GRADING PERMIT.
5. FILTER BAGS SHALL BE CLEANED OR REPLACED ON A REGULAR BASIS (NOT BE MORE THAN HALF FULL AT ANY TIME).
6. FILTER BAGS MAY BE INSTALLED IN EXISTING CITY OR NCDOT ROADS AS LONG AS STORM DRAINAGE IS NOT IMPEDED.



SECTION



DEFLECTOR SHALL BE PLACED SUCH THAT IT WILL NOT COMPLETELY OBSTRUCT STORM WATER FLOW FROM ENTERING VIA THE CURB OPENING. ENSURE NO MORE THAN 25% OF CURB OPENING IS OBSTRUCTED.

INSTALLATION

NOT TO SCALE